

Member of BMW Clubs International Council

www.bmw-clubs-international.com

BMW Motorcycle Club
ACT



Shaft Drive Lines

December 2012



***All I want for Christmas is
BMW Motorrad...***



SHAFT DRIVE LINES VOLUME 32, DECEMBER 2012

2012-13 COMMITTEE

President:

Martin Robertson - R1200GS

0409 329 270

President@bwmccact.org.au



Vice President:

Ian Warren - K1200GT

02 6166 1466

04 1478 9632

Vicepres@bwmccact.org.au



Ride Coordinator

David Morgan - R1200GS

0429 105 155

Rides@bwmccact.org.au



Secretary:

Dennis Littame

Secretary@bwmccact.org.au



Treasurer:

Jack Foley - R1200GS & R75/7

0488 036 007

Treasurer@bwmccact.org.au



Membership Secretary:

Steve Retallack - F800GS, K1200S

0457 021 879

Members@bwmccact.org.au

Social Secretary:

Steve Hay

0422 006 727

Social@bwmccact.org.au



Editor:

Garry Smee - R1200ST / R100GSPD

(02) 6201 7915 (w) & F800GS

0400 264 372 (m)

Editor@bwmccact.org.au



Public Officer:

Steve Hay

0422 006 727

Publicofficer@bwmccact.org.au

Webmaster:

Alan Walsh - R1200GS

Web@bwmccact.org.au



Clubs Australia Delegate:

Vacant

Delegate@bwmccact.org.au



Cover Photo: Rolfe Classic' Michael and scooter pillion Jane test out BMW's new to Australia for 2013, C650GT.

ABOUT THE CLUB

Meetings: For 2013, monthly Club meetings will start at 0930 on the fourth Sunday at different locations. The President will advise the location by email and on the Club's website. Alternatively, you can contact the President directly at president@bwmccact.org.au.

Membership: Membership forms are printed periodically in the magazine or can be downloaded from the Club's website <http://bwmccact.org.au>

Web Site: Check the Club's website <http://www.bwmccact.org.au> for updates to rides and social events and keep in touch by joining one of our Yahoo groups:

- BMWCCACT: <http://autos.groups.yahoo.com/group/actbwmcc/>.
- ACTGravel surfers: <http://autos.groups.yahoo.com/group/ACTGravelsurfing/>.

Activities: The Club endeavours to have at least one organized run and social event per month and listed on the [What's On](#) page and welcomes suggestions for rides or social events. Send your suggestions to the Ride Coordinator or Social Secretary.

Whilst we make every effort to keep the [What's On](#) page accurate, changes to meeting times and places can occur between publication dates. The Club uses email to inform Members of late changes to rides and activities or general information including ad-hoc events. If your email address has changed or your mailbox is full, we cannot contact you, so advise the Membership Secretary of changes to your contact details. The website contains the most up-to-date information.

Charity Support: Profits from the Club's Kosciuszko Rally, held each October, are used to support a nominated charity. There was no profit in 2012.

PRIVACY OF CLUB MEMBER INFORMATION

The Club's *Privacy & Spam* policy is available on the webpage or on request.

SHAFT DRIVE LINES

Whilst the Editor has absolute discretion, we welcome contributions to the Club's magazine 'Shaft Drive Lines'. Email is preferred to the editor@bwmccact.org.au or by @mail to

The Editor, Shaft Drive Lines
BMWCCACT
PO Box 4042
WESTON CREEK ACT 2611

For emails, do not embed pictures or compress their size to less than 200 dpi.

DISCLAIMER

Participants in BMWCCACT Incorporated (the Club) activities do so at their own risk as is obeying the law. The Club, Committee and members are not responsible for personal injury or loss arising from or through any Club activity. Remember your riding style impacts on the enjoyment and safety of other road users.

The opinions, articles and pictures published in this magazine are those of the individual writer and not the BMWCCACT Inc, Editor or BMW Motorrad. Technical articles and other such information where provided is for use at the discretion of the individual and are not intended to detract from genuine BMW spares, service and warranty.



<http://www.clubs.bmw.com.au/scripts/main.asp?PageID=12927>
<http://www.bmw-clubs-international.com>

PRESIDENT'S BANTER

Hi fellow members,

Our official biking year is done and for many of us all that remains of the year are Christmas get-togethers with family and friends. I wish you all a happy and safe Christmas and that you enjoy the festive times with your family and friends and hope that those motorcycle related gifts are just what you wanted.

I have solved this dilemma for my family by purchasing some must-have bike stuff myself and distributed these to wife and son in order to get them back on Christmas Day. Sure beats the usual fare of socks and DVDs.

If you are travelling further afield whether by car or bike, please go with care and consideration of the extra traffic and come back to us after a safe journey. There are lots of other travellers who will take risks with their own lives and endanger everyone else on the roads. Be extra careful and come back home refreshed and ready for a busy BMW year.

And talking of a busy year, the Committee has proposed several good events early in the New Year, with another casual meeting at Black Mountain Peninsula on Sunday 20th January with the usual bacon & egg rolls and coffee; I hope to see you there. Also in January is a ride to Mudgee on the Australia Day long weekend with a winery tour on the Sunday. Check out the *What's On* section for all the New Year activities.

Further into 2013, the club is planning a rally in Canberra to commemorate 20 years of the oil-cooled boxers. We also hope to get a preview of the replacement boxer, the new water-cooled machine, plus there are lots of car and bike related events as part of the Canberra 100 year celebrations. Who would live anywhere else?

Ride Safely

Martin Robertson

CLUB MEETINGS

Club meetings for 2013 will be roving and held at 0930 on the third Sunday of each month, following a BBQ breakfast and before a ride decided on the day. The venue will be advised by email to members or contact the President president@bmwmccact.org.au.

CONTENTS

President's Banter	3
Welcome to Our New Members	3
Club Meetings	3
Contents	3
What's On.....	4
2013 BMW TS Safari.....	5
Casuarina Sands Monthly Meeting & Breakfast 25 November 2012.....	5
BMW Motorrad System 6 helmet now in Australia.....	6
BMW Motorrad World Superbike Hospitality at Phillip Island.....	6
BMW Clubs Australia Nationals 2013	9
Rally Indochina: Great Ride, Great Cause.....	10
2012 BMW MCCA ACT Concourse, Awards & Christmas Dinner.....	11
Club Ride to Berry via M92, Kangaroo Valley & Bundanoon	11
2012 Cold Flame Rally	13
The Monthly Farkle.....	15
GP Ride.....	16
Improving Member Riding Skills.....	18
Club Member First Aid Training	18
Club Identification.....	18
The Editors Fill	19
Crookwell Ride	20
Classifieds	21

WELCOME TO OUR NEW MEMBERS

None this month ☺



Save someone's life, donate and share your blood now. Do not forget to tell them that you are with the BMW MCCA ACT and you need to register your preference online beforehand!

WHAT'S ON

Club members meet for an informal breakfast each Sunday from 0845 at the [Thymes Thirty Three Café](#) 3/33 Ellendon Street Bungendore. Owners Karen & Alison offer BMW Club members a free small coffee when they purchase the big breakfast of 2 eggs, bacon, sausage tomato and mushrooms for \$16.00.

Everyone is welcome from 0830-1000 and often an ad-hoc short ride is arranged on the day for afterwards. Please free up the tables from 1000 if you are not eating to make way for other customers.

This calendar lists Club activities and updated on the web page (www.bmwccact.org.au) or by the [Ride Coordinator](#) by email to members. This does not stop you from arranging a ride, and if you want company, email the [Ride Coordinator](#) who will pass your planned trip on to the Club members. Do not forget an article and pictures of your ride for the magazine! Send those to the [Editor](#)

Date	Detail	Contact
3 rd Sunday each month	For 2013, monthly Club meetings will start at 0930 on the third Sunday at different locations. A BBQ breakfast from 0830 is available to members and visitors (\$2 egg & bacon rolls and \$2 coffees) and meeting followed by a ride decided on the day.	The President will advise the location by email and on the Club's website. Alternatively, you can contact the President directly at president@bmwmccact.org.au .
Riding events	Rides will be notified by email and updated on the webpage. If you are going on a ride and want company, then email the Ride Coordinator before hand with ride and contact details and an email will be sent to members.	Contact the Rides Coordinator (rides@bmwmccact.org.au)
Social events	Social events will be notified by email and updated on the webpage. If you want to come to or plan a social event and looking for company then email the Social Secretary before hand with event and contact details and an email will be sent to members.	Contact the Social Secretary (social@bmwmccact.org.au)

2013	Date	Detail	Contact
January	Generally no organised rides, but if you are looking for company, send an email with a start point, time and contact details to rides@bmwmccact.org.au		
	Monday 31 Tuesday 1	New Year Gathering Micalong Creek approx 8kms south of Wee Jasper.	Rob Lovett email rob@gaslightbooks.com.au
	Friday 11 Sunday 13	NEW SITE Caloola Farm, Top Naas Road, south of Tharwa.	MRA ACT PO Box 1768 Canberra City ACT 2601 Email: committee@mraact.org.au Web: www.mraact.org.au Phone: Leen, 0409 984 008
	Sunday 1 Sunday 15	2013 Dakar. Watch on SBS or online here: http://www.dakar.com	
	Thursday 5 Sunday 8	Summernats Exhibition Park Canberra	To book, just go to the Summernats website: http://www.summernats.com.au/
	Wednesday 11	Committee Meeting 1930	Contact the President
	Sunday 20	General Meeting, Black Mountain Peninsula	Contact the President
February	Friday 8 Sunday 10	BMWTCNSW Karuah River Rally, Chichester State Forest 30kms from Dungog (15km of dirt). For details, see www.bmwtcnsw.org.au or a map at the Bank Hotel Dungog NSW.	Contact BMWTCNSW, Rob Lovett on 0417 267 425 or rob@gaslightbooks.com.au
	March	Friday 8 Monday 10	28th Annual Cold Flame Rally, NSW. Pinch River site, Barry Way approx 34kms south of Jindabyne.

2013 BMW TS SAFARI



Bookings for the 17-22 February 2013 BMW *Touren Safari* opened on 18 November 2012.

You can read more and book here: http://www.bmw-safari.com/index/2013-ts-safari?utm_source=BMW+Safari&utm_campaign=0d921ca7e5-TS13_announcement&utm_medium=email

CASUARINA SANDS MONTHLY MEETING & BREAKFAST 25 NOVEMBER 2012

Garry Smee, R100GSPD disguised as a F800GS

President Martin's monthly ride/eat/meetings with egg & bacon roll inducements and genuine latte coffee's are proving a success with 18 servings (before running out) taken up at November's meeting at Casuarina Sands on the Cotter River. ACT taxpayers should be commended for this well planned and recently upgraded facility; if you have visitors over Christmas why not take them along for a BBQ before taking a tour of the *Canberra Deep Space Centre* at Tidbinbilla before or after. Post meeting a group left for a ride to Gunning via Boorowa and Crookwell that was short on Minutes but long on enthusiasm. The ridden 'Volvo' was excused as it brought the generator, food and all-important Aldi latte generator. Roll on summer...



BMW MOTORRAD SYSTEM 6 HELMET NOW IN AUSTRALIA.

Damien Cook, BMW Australia

BMW Motorrad is happy to announce the arrival of the System 6 helmet in Australia.

The flip-front BMW Motorrad System 6 helmet, with integral drop-down sun visor, is the latest in flip front helmet technology. In 1981 BMW Motorrad released System 1, the world's first flip front helmet and since then has continued to develop the System Concept.

Weighing only 1,570 grams (small shell) the System 6 is comfortable and thanks to distinctive the aerodynamic design, delivers excellent acoustic performance. This reduction in wind noise decreases rider fatigue and enhances rider safety.

Features: Integral drop down sun visor, Glass-fibre reinforced plastic shell, Impact absorbing EPS inner shell, Double scratch resistant visor for fog free vision in all weather conditions, Removable and washable DuPont Coolmax interior, One hand operation for chin guard, Excellent head and visor ventilation.

Sizes: 52/53 – 64/65

Colours: Night Black, White Silver Metallic, Cosmic

RRP: \$800 - \$900



BMW MOTORRAD WORLD SUPERBIKE HOSPITALITY AT PHILLIP ISLAND.

Damien Cook, BMW Australia

BMW Motorrad Australia is offering an exciting pit roof hospitality package for BMW fans at the Phillip Island season opener on February 22nd-24th. The BMW Motorrad supported facility will be located on pit roof, offering a private, all weather, sheltered experience with private outside viewing area. See the bikes close up as they scream down Gardner Straight.

Between the action on track, enjoy the sumptuous surrounds and full catering facilities, including beer and wine. Never miss a moment with full TV coverage and lap timing in the facility and a Super Screen opposite the viewing area.

In 2013, BMW Motorrad Italia GoldBet will fly the BMW flag with Marco Melandri and new teammate, Welshman, Chaz Davis on the BMW S 1000 RR. Melandri was well in contention for the 2012 Championship race until the final rounds and is looking to go a couple of place better in 2013. This pairing of the fast Italian with the talented Welshman will see the S 1000 RR right in the action as they vie for the top spot on the podium.

Three-Day tickets are priced at \$725 per person. Included in the three-day package, that provides track entry, meals and refreshments, each guest will also receive a BMW Motorrad gift pack

Places are strictly limited. Don't miss out; see the kick off to the 2013 WSBK and ASBK season in style!

This exclusive package features the following:

- 3 day access to the circuit with exclusive Superbike paddock area
- One complimentary official program per person
- Pit Walk on both Saturday and Sunday per person
- Access to the paddock show for Media events
- Team Rider appearances (subject to rider availability)
- Reserved Carpark (for 2 guests) or motorcycle pass
- VIP shuttle bus from reserved carpark to infield area and return
- Pit roof suite with private outside viewing area
- Flat screen television showing all of the on track action
- One reserved seat per person (book early for best available seat)
- Morning & afternoon tea plus buffet lunch Friday, Saturday and Sunday
- Complimentary beverages including beer, wine, soft drink, tea & coffee
- Cash bar for spirits

To secure your place at the exclusive BMW Motorrad Hospitality facility for the opening round of the 2013 World Superbike season please download the booking form. WSBKhospitality@bmw.com.au





Rolfe Classic BMW

Sales
Service
Parts & Accessories
Rider Equipment
Finance



The Ultimate
Riding Machine

THE GS LEGEND CONTINUES.

The world is smaller than you think. For over 30 years, BMW's GS series has been taking riders to all ends of the globe. Isn't it time you were part of the legend? Meet the R 1200 GS Adventure. The four-valve DOHC technology gives additional power while the exhaust gives extra punch. One more reason to get on a GS and see the world. See Rolfe Classic BMW Motorrad for a test ride on the R 1200 GS Adventure today.

**ROLFE CLASSIC.
CANBERRA'S ONLY AUTHORISED BMW MOTORRAD DEALER.**

Rolfe Classic BMW Motorrad

2 Botany St, Phillip ACT 2606

Tel : 02 6208 4135 Fax : 02 6208 4112

motorrad@rolfeclassic.com

rolfeclassic.bmw.com.au

LMD17000534



New
TWIN CAM Power.



BMW Clubs Australia Nationals 2013



Easter Friday 29th March to Monday 1st April 2013

All Clubs Australia Members and Families are invited to join us at
Silverwater Resort, 17 Potters Hill Rd, San Remo, Phillip Island

- Friday Night Meet and Greet Cocktail Party around the pool at Silverwater Resort.
- Saturday Celebration of Excellence on the lawns overlooking the water at Silverwater Resort.
- Saturday night Dinner at the Nobbies Function Centre and viewing of the Penguin Parade.



- Sunday Motorsport Sprint Day at the Phillip Island Grand Prix Circuit.
- Sunday Touring Event through the rolling hills of South Gippsland.
- Sunday option is to have some "Pace Car Laps" around Phillip Island Grand Prix Circuit.



- Sunday Night Presentation Dinner to be held at the Silverwater Resort.
- Monday Stayer's Lunch at the Phillip Island Grand Prix Circuit Museum.
- Monday option is to race Go-Karts at the miniature Phillip Island Grand Prix Circuit.

Registrations are now open on-line here:
<http://wired.ivvy.com/event/BMWNAT/>

RALLY INDOCHINA: GREAT RIDE, GREAT CAUSE

Media Release – December 2012

Dates: 8-22 April 2013

Event Website: www.rallyindochina.com

Route: Starting in Hanoi, Vietnam travel the Ho Chi Minh Trail.



Hi Members of the BMWCCACT,

I am writing to let you know about an event that I am helping to organise here in Vietnam. I believe it could be of interest to your members because the event will be run exclusively on vintage Ural motorcycles, which as you may know are Russian copies of early-model BMW sidecars.

The event is called Rally Indochina, and will be held in April 2013 to raise funds for an excellent organisation here that works with disadvantaged children. The ride will begin in Hanoi and follow the remnants of the Ho Chi Minh Trail for about 1,500km over seven days to finish on the country's scenic central coast. The ride will be run on a fleet of classic, fully restored 650cc Russian Ural motorcycles. Because of Vietnam's historic links with the Soviet Union, this is one of the few countries in the world where you can still find these classic motorbikes. The ride will take in many of the famous sites from the Vietnam War, including Khe Sanh, Hamburger Hill and the DMZ.

The previous two rallies attracted 40 riders from around the world, and raised over US\$100,000 for the Blue Dragon Children's Foundation. The charity was established by a foreign volunteer living in Vietnam and has built up a very good reputation for its work with disadvantaged children in Vietnam. This money will be used to help the foundation meet its aim of ending the trafficking of children from Hue city to illegal garment sweatshops in Ho Chi Minh City. We are hoping Rally Indochina 2013 will be an even bigger success.

Rally Indochina is organised by bikers, for bikers. It is jointly organised by two foreign-owned motorcycle tour operators that have been working in Vietnam for years, so we know all of the best roads, hotels and restaurants along the way. While the route follows the Ho Chi Minh Trail, it also returns to the coast most nights, where there are excellent hotels, up to a four-star standard.

One of the organisers, Explore Indochina, worked very closely with the BBC's Top Gear: Vietnam Special, and has plenty of behind-the-scenes stories. Explore Indochina also worked with Charley Boorman and Gordon Ramsay when they recently filmed in Vietnam.

Let me know if you are interested in finding out more about Rally Indochina, or would like to include it in your newsletter as an event or brief news piece. If possible, could you also link rallyindochina.com from your website? I am attaching the media release, and we can provide further copy and photos as required.

I look forward to hearing from you.

Best regards,

Glenn Phillips
Rally Indochina

Email: glennoi@me.com

Phone: +84 912 105 075

Web: www.rallyindochina.com

Twitter: [@rallyindochina](https://twitter.com/rallyindochina).



Complete the Rally on a vintage, ex-Soviet, 650cc Ural. Urals are tough, high torque, low centre of gravity motorcycles with a distinctive sound and very classic look.

2012 BMWCCA CT CONCOURSE, AWARDS & CHRISTMAS DINNER

In September this year, the club joined the many German Car Marques for the *Shannons German Auto Display*. Please have a read of the SGAD report in the October issue of *Shaft Drive Lines* for a detailed run-down of the event. A traditional part of this event is our own Club Concourse where the keen and fastidious members bring out their polished and detailed machinery to be admired by their fellow club members and the passing bike and car enthusiasts. This year was no different except that it could have been re-named the GS show with about 9 of the 15 bikes that turned up being BMW's most popular variety. The judges were our Web Master, Alan Walsh and President, Martin Robertson, who after some deliberation found some excellent examples to fit into some recognisable categories. These winners were presented with their trophies at the Christmas Party or for the missing few, at the next breakfast.

Category	Winner	Model
Sports	Adam Logie	R1100S
Sports Tourer	Grant Logie	R1200ST
Gelände Strasse	Bill Brown	R1200GS
F Series	Roger Paul	F650GS
Judges Choice	Ian Leyton-Grant	R1100RS

Jim Reid was voted the peoples choice at the SGAD with his impressive K1600GT and received a glass plaque from the event sponsor Shannon's Insurance.

Ride Safely

Martin Robertson



Treasurer Jack sporting his 'door prize' winnings a BMW beach towel.

CLUB RIDE TO BERRY VIA M92, KANGAROO VALLEY & BUNDANOON

Garry Smee, R1200ST

Leaving Queanbeyan under grey skies Dave & Ali (R1150GS), Dennis (R1200GSA), Bob (F650GS), Dave (R1200GS) to have Martin (R1200GS) catch us regrouping at Tarago before the run to the coast via Nerriga and M92 and the usual culprits of Canberra drivers. A car/truck double fatality saw the highway closed and detour via Shoalhaven Heads before arriving in Berry and magazine advertiser [Good Wool Store](#). Whilst I already have a seat cover, Bob had his F650GS measured up for a nice matching yellow one. The shop also does car seats, ugg boots and coloured skins all of high quality. We then made our way over the hills to Kanagaroo Valley for pub & café lunch to preferences, before taking the run up the hill to Bundanoon. This road can on occasion be quite slow, but I managed to get past as did the others without difficulty. From Marualn the group started to split up and head for home, with Martin, Dave, Rob and I enjoying heavy rain from before Tarago to almost home. Nonetheless a great days ride of ~470km in company.





Shopping Cart: 0 items



EastCoast BM's

Australia's
Largest **RANGE**
of aftermarket
BMW Motorcycle
Accessories

Search:



Languages:



Currencies:

AUD

Home Page

New Products

Specials

My Account

Contact Us

BMW Bike Models

- F650/F600GS twin (14)
- R 1200GS JA 2008 (1)
- F 650 / CS / GS / ST / Dakar (31)
- F 800 S & ST (15)
- K 1200 RS & GT (20)
- K 1200 S, R, Sport & GT (5)
- R 1100 / 1150 RT (26)
- R 1200 GS (118)
- R 1200 R (28)
- R 1200 RT (34)
- R 1200 S (38)
- R 1200 ST (16)
- R 850/1100/1150 GS & Adv. (33)
- Remus Sport Exhaust (34)
- Accessories (4489)



F 800 S & ST

Displaying 1 to 10 (of 15 products)

Result Pages: 1 2 [Next >>]



\$220.00
Made of high quality aluminium and anodized. 8 times adjustable with...

[Adjustable Footpegs - Front - R 1200, K 1200 & F 800](#)

[details](#)

[add to cart](#)



\$220.00
Made of high quality aluminium and anodized. 8 times adjustable with...

[Adjustable Footpegs - Rear - R 1200, K 1200 & F 800](#)

[details](#)

[add to cart](#)



\$120.00
HORNIG - White rear light with wear-free LEDs. Super optics, quick...

[Clear tail light lens - F800S & ST](#)

[details](#)

[add to cart](#)



\$280.00
HORNIG - Our crashbars are made of high-quality steel and are special...

[Crashbars - Black - F 800S](#)

[details](#)

[add to cart](#)



\$280.00
HORNIG - Our crashbars are made of high-quality steel and are special...

[Crashbars - silver - F 800S](#)

Mick Owen Motorcycles trading as East Coast BM's: <http://www.eastcoastbms.com.au/>

2012 COLD FLAME RALLY

Dave Morgan, R1200GS

After being deferred due to autumn floods damaging the Barry Way, this years Cold Flame Rally was being held at the usual site, the Pinch River Camp Ground in the Kosciuszko National Park, on the weekend of 17/18 November. Accordingly, I set off mid morning for the rally, with a number of other bikers heading south towards Cooma. Most of these however, had disappeared after Cooma leading me to assume they were headed for Bombala's Festival of Motorcycles being held the same weekend. After fuelling the bike and myself at Jindabyne, I headed off down the Barry Way. Weather at this point was mild at around 15 deg C, however, by the time I'd reached the bottom of the Barry Way at Jacob's River, the temperature was up to 25 deg C. Very pleasant. Incidentally, it was noticeable that the local authorities had been at work on the Barry Way with a blade and the like, as the surface down nearly to Jacob's River was much improved compared with a month earlier. The riding conditions were excellent and there was much to take in and observe along the way, as the road ran along the Snowy River. However, what I didn't always takes in and observe were the odd pot hole and wash out along the Way, hidden in the shade, which was signalled to me by sudden thump as the front end smacked into it. However, the R12GS being what it is, it just ploughed through and on, none the worse for it.



Wallace Craigie Lookout, on the Barry Way.

Made the rally site around 2:00 PM, pulling up at the picnic table and shelter where rally hosts, Bob & Sue Coleman, had set up shop. After handing over the \$10 donation, in support of Breast Cancer Australia, and picking up the badge, I set up the tent on some spare dirt and after changing out of the riding gear into shorts, etc, got about fixing stuff - such as fixing me some Kraken (rum) and coke. It was good to catch up with ex Club members, Bob and Sue, and Chris Bourke; as well as catching up with other folks who had



Bob & Sue Coleman (right) with Spyder and "Taj Mahal" camper in the background

made the rally. In particular, Claude from Rosedale (Vic) fronted up on his Matchless twin, complete with dust covering from the recent OCR to Cape York, and no doubt, many other places. There were many different types of iron horse to be seen around the rally site, as were opinions on this or that piece of kit. Some time after midnight, well after the Kraken had gone and the bottle red dealt with, I bade good night to the remaining two fellers at the campfire and crawled off to the tent.

In the morning, after fixing some breakfast and packing up I made farewells and headed out of the campsite.

Near where the camp ground track meets the Barry Way, I came across Mick from Albury with his R1100S up on the centre stand and his air compressor trying in vain to pump his flat tyre. Problem was however, not with the compressor, his valve had come apart. However, being his lucky day I had a spare valve in the tank bag from my recent trip to northern Australia. So handing it over to Mick, I suggested that he get the wheel off and down to Chris Bourke back at the camp, who had a tyre plier to "get the job done" (to quote our PM). After that advice, I headed off for home. The return trip was basically a reverse of the way out with the exception that I turned down the Snowy River Way to Dalgety then N via the locality of Maffra for Cooma - a more interesting ride than via Jindabyne and Berridale. If you haven't been on the Cold Flame Rally in the past, try to make 2013's as it is a nice ride there and back, great setting and good company. As always. Also, I learnt later that Mick got the tyre off, the good valve in, air in and made home ok.



"Claude and his Matchless twin



Cold Flame Rally site, Pinch River



Australian Motorcycle Headlight Protectors

Have you priced a headlight for your bike lately? You could be in for a shock. The next time you're in your local bike dealer, ask the person in the

spare parts section how much your headlight would cost to replace. A.M.H.P. produces lightweight, unobtrusive headlight protectors that keep the most vulnerable and easily damaged part on your bike safe and sound. They are made from 3mm thick, clear acrylic. They have smooth polished edges and are secured with Dual Locks. Prices for headlight protectors range from \$42.70 to \$67.80 plus Registered or Insured Post (\$49.80 + \$15 for R1200ST)

<http://www.amhp.com.au/amhpsshop/index.php>



LAMIN-X, BMW R1200GS Adventure (05-) Paint Protection Complete Kit

Protects your BMW R1200GS Adventure paint finish from stones, scrapes, bugs, and other paint damaging items with an invisible protective layer. Quite possibly the best investment you will make toward protecting your bike. Kit Protects the fairings, fender, and tank area (with colour coded lower bumper).

From the US and costs \$69.75 + postage. Other models and brands covered as well, see

<http://www.lamin-x.com/>



BeadPro Tire Bead Breaker and Lever Tool Set by Motion Pro

Seen at Adventure Designs for US\$65 + postage here <http://www.advdesigns.com/betibebrandl.html> (also on eBay).

- Innovative multi-use tire tool set
- Breaks the bead on most street and off road motorcycle tires
- Integrated tire spoons for tire removal and installation
- Light weight and compact size is perfect for tool packs
- Ergonomic handles with cross guard to keep hand from riding forward
- Forged 7075-T6 aluminium construction for strength and durability
- Black anodized finish



¹ Fancy Accessory Really Kool & Likely Expensive.

All these products are included for member's information only; no product is endorsed or warranted by the BMW MCCA CT.

GP RIDE

Dave Morgane, R1200GS

Having a week to spend over the Phillip Island GP week ensured I had time to take in the more scenic routes there and back. Having heard of a pretty campsite in Victoria's Alpine National Park at Native Dog Flat, just off Limestone Road between the Barry Way and Benambra, I'd make that the night stop. Heading south from Jerrabomberra in fine weather, I made Jindabyne in good time, stopping briefly to fuel up the R12GS. Making Wallace Craigie Lookout, on the Barry Way, I wolfed down a sandwich, ticking off lunch. Being my first time on the Barry Way, since around October 2011, the degradation due to flood / rain damage was noticeable. Just after crossing into Victoria, I met a Landcruiser coming in the opposite direction hauling a trailer of canoes, but was then gobsmacked to see a full on 60-seater coach following him. Pulling over to let him past, I was happy to have met him there and not on the climb up from Suggan Buggan to the Hamilton Gap. I supposed that Landcruiser dude had comms with Coach dude and informed him in stages when all was clear for him to proceed down from the Hamilton Gap. Perhaps.



Shortly after Hamilton Gap, I made Limestone Road and noted that a "Road Closed" sign was on display, so rather than calling B.S. on the sign and proceeding on, discretion won the day & I reluctantly continued on the Barry way, making Buchan Caves camp ground the night stop. Talking to a ranger the next morning at Buchan he was surprised that the sign was up there but given that they close the road with gates, I was happy with yesterday's decision. As I only had to make Bairnsdale to meet up with a friend travelling to the GP, I checked out some side roads, such as the road from Buchan down to the Snowy River at Barry Dooley and the historic trestle just off the Princes Highway, just after Nowa Nowa. Made Bairnsdale just after lunch and set up the tent in the Mitchell Gardens Caravan Park. After catching up with other bikers at the Caravan Park, I headed out to in the early evening to catch up with friends on a farm at Forge Creek.

The following morning, we met up with other Barry Sheen Ride bikers in the main street, including Club member, Nigel McFarlane, doing ride marshalling type stuff. After checking out the bikes of various sorts, etc, we headed to the outskirts of Bairnsdale with the group ride, and then peeled off to take in the various back roads and byways. These took us down through some great riding country and into progressively cooling and drizzly weather before making San Remo, where we fuelled up. After the traditional "stop / start" ride around the circuit, we pulled into our group house at Woolamai to catch up with other friends, not seen in 12 months.



Mark Rule, R1150RT, Winner MotoGP Show & Shine - Best Tourer

As usual, Phillip Island didn't disappoint with plenty of good racing and things to see off the track as well. Three riders in our group had entered their bikes in the Show-N'-Shine and won their categories, although my bro-in-law, Mark's "Falcon XR6" electric blue R1150RT was only up against a Harley Road King (or some such), so no competition there. Departing the Island on Monday morning around 10:00 AM, I took the South Gippsland option via Fish Creek, Foster, Toora, Yarram (lunch), Sale, Bairnsdale, and Bruthen then up the Great Alpine Road to Omeo. At Omeo, I queued up with other bikes to be gassed up at the only servo it seemed, before heading to Benambra, where I picked up Limestone Road. After some 60 kms I made Native Dog Flat camp ground, where I set up camp. Also camping at NDF were Mick & Mark from Gippsland in their 4WD and camped further over was Rob from Maleny, Queensland, returning home from the GP on his much travelled R1200ST. After spending the evening around Mick & Mark's fire, I headed back to my tent. Before turning in, I noted the herd of brumbies milling around the open ground nearby, hoping they wouldn't find a need to rub their sides against my bike during the night.

After a coolish night, Rob came over in the morning asking for help with starting his bike and pumping up his rear tyre, in which he'd had to repair 3 punctures during his travels - the worst being from a rock, right in the centre of the tyre's tread. The lightweight jumper leads I'd made up got his bike fired up and the "Adventure Designs" mini-compressor got his tyre up from 20 psi to around 34 psi. That saw him on his way. After I had packed up and headed off, I eventually came across Rob again by the side of the Barry Way, with a flat tyre again. Having re-plugged it and used another CO2 cartridge, I got the compressor into action again and he was on his way. I followed him into Cooma, which we made after yet another stops 10 kms from Cooma to repair the puncture (the plug had blown out). By this time, he'd shoved 3 plugs into the damage. After lunch at Cooma and getting fuel, we were just 14 kms N of the town when his tyre went down again. After plugging it again and pumping it up, it was clear that it was "game over" and so I parted company there. Me to head home and Rob to head back to Cooma to get a new tyre or get a proper repair to the current one (a Pirelli "Angel"). The following weekend, I got a call from Rob to say he eventual got a new tyre in Cooma, then made Canberra Motorcycle Centre just on closing where after successfully begging them to re-open, he bought up a number of 45 g CO2 cartridges and more repair plugs, before heading on his way north and home to Maleny. So overall, it was a good week away, in good company, on some great roads and scenery, on a great bike, which performed flawlessly throughout. Oh, and the impromptu "tyre repair workshop" had its training benefit too.



*Marshall (& Club member)
Nigel McFarlane - 2012 Barry
Sheene Ride, Bairnsdale*



Figure 1 Historic wooden trestle bridge, Nowa Nowa, Vic

IMPROVING MEMBER RIDING SKILLS

One of the Club's objectives is to improve club members riding skills. In recent years, the Club has sponsored and organised rider skills training and motorcyclist first aid courses. This year the Committee has adopted a different approach where you book, pay and attend a selected rider training program and on completion present your 'certificate' to the Treasurer who will reimburse you \$100 off the course cost. Sorry no reimbursement for travel, accommodation, meals or entertainment: training course only.

The Committee has approved the following training providers and courses. If you find another one, please send the details to the Committee@bmwmccact.org.au for consideration.

- Stay Upright ACT @ Sutton, <http://www.stayupright.com.au/stay-upright-act-0>
- Academy of Off Road Riding @ Nelligen, <http://www.academyofoffroadriding.com.au/adventure-bike-courses/>
- Top Rider Motorcycle Rider Training @ Marulan, <http://www.toprider.com.au/Pages.asp?PageID=42> (occasionally in Canberra, check the web).

In anticipation of the massed enthusiasm, the subsidy is capped at 20 member courses for 2012. We will keep you up to date on where we are at and if you are concerned please email the Treasurer@bmwmccact.org.au before booking your course.

The rules!

- You must be a current financial member of the BMW M C C A C T Inc. Yes, we will check.
- You must book, pay and attend a course with one of the 3 rider training organisations listed above.
- You, having successfully completed your course send a copy of your certificate to the Treasurer@bmwmccact.org.au with your contact and bank details who will reimburse you \$100 (maximum).
- You can only be reimbursed once in this program cycle, April 2012 to March 2013.

CLUB MEMBER FIRST AID TRAINING

Know all there is to know about cornering, braking and riding safely on road or dirt? Then maybe a first aid course is more to your liking or need; not having done a rider skills course.

The Club has arranged and will subsidise a motorcyclist centric first aid course. This one-day course will not turn you into a paramedic, but may give you the skills to help at an accident until one turns up. Depending on where you are, this may be quite a wait and worth having some basic first aid skills like:

- Being Prepared
- Mechanism of Injury
- Scene Safety
- DRABCD action plan & CPR
- Choking
- Wounds & Bleeding
- Head, Neck and Spinal injury
- Chest & Abdominal injury
- Breaks & Dislocations
- Medical Emergencies

The dates of each course will be notified by email, so make sure that you are a financial member and look out for the email. More Rules: Only BMW M C C A C T financial members will be accepted and preference given to those who have not completed a previous first aid course.

The cost of the subsidised course is \$30 per member who can live without the certificate and \$50 for those who want to be assessed and if successfully completed awarded a nationally recognised qualification in 'Provide Emergency Life Support' (HLTFA201B).

'Remember the life you save doesn't have to be your own, so make sure you bring a riding buddy.'

CLUB IDENTIFICATION

BMW Motorcycle Club
ACT



Looking for a sticker of the Club logo for your bike or badge to wear? Small Stickers \$0.50, large ones \$1.00 and enamel pin badges \$5.00. Send an email to members@bmwmccact.org.au to arrange for pickup, delivery and payment.



Smooth out your ride
We've got you covered.



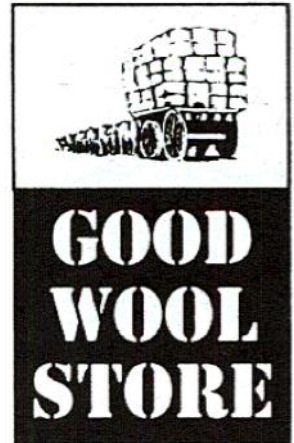
Australia's premium sheepskin motorcycle seat cover service.

LUXURY COMFORT & PROTECTION.

www.goodwool.com.au

For information on club
discounts and pattern
availability

Good Wool Store Pty Ltd
49 Queen St. BERRY 2535
Ph 02 4464 2081
Fax 02 4464 3344



THE EDITORS FILL

Wanted: Pictures of Members, their bikes and their trips during 2012 for the Magazine and Christmas Party. Send them and articles to the Editor@bmwmccact.org.au with captions and photographer credits.



Hi Riders,

I take this opportunity to wish members, their partners and families all the best for Christmas, safe riding and hope to see you on the road in the New Year. By the time you read this, the MRA Toy Run will be over, providing an opportunity to reflect on our engagement with the community and those in need. As will the Club Awards and Annual Dinner that provides an opportunity for you to engage with the Club and perhaps talk of things other than motorbikes. As we ride into the New Year, why not consider a resolution to become more involved in the Club? It's your and our Club so will only reflect what we collectively put into it. Some Committee changes through

2012 have left a few vacancies and double-hatted Committee members. No single committee job is all consuming, so if you would like to contribute to the Club's direction why not consider volunteering for the Committee; just contact President Martin. The Club's AGM is in March, so what better way to raise your election profile than being on the Committee to start with. On job training and support provided free!

I hope to have my OCR2012 postscript in this edition and if not then sometime in 2013, however I have started Christmas early by adding a F800GS to the garage before promptly and consistently renewing Jane's acquaintances with Canberra's courier drivers; I may even get to ride the bike one day. What is the farkle capacity of a F800GS? Apparently as least as much as a R1200ST and R100GSPD and ...

Lastly, if you have time off over Christmas and are going for a ride then why not invite the Club? Send an email with details to Dave Morgan at rides@bmwmccact.org.au a few days ahead of time.

That's my fill,

Garry Smee, Editor@bmwmccact.org.au

CROOKWELL RIDE

Dave Morgan, R1200GS

After having had breakfast and the Club General Meeting on 25th November at the Casuarina Sands Reserve, 8 riders headed off into what promised to be a fine but warm day for a ride to Crookwell via Uriarra and Mountain Creek Roads to Yass and Boorowa. So, after having just left the non-riders back at the Reserve, we'd crossed the Murrumbidgee and just turned off onto Uriarra Road for the ride up the mountain, when a police car inserted itself between Bob and me and the remainder of the group.



"L-R: Bill, Sue, Andrew, Brian, Bob, Hoss and Chris - final regroup at Collector"

Furthermore, having achieved that, he bunged on his lights and pulled the lot of us over.

Wondering what all this was about, it turned out that we had done nothing wrong ... um ... yeah ... so ... in the end, he apparently wanted to give us a pep talk on riding safely through the area. That was it. However, as I mentioned it was warm and in the course of his monologue, all of us were not getting the forced air-cooling we'd anticipated. Fortunately, a sports biker coming down the mountain, at full lean, got his attention and that was our exit. Surreal indeed.



"Sue, R1200R, on Mountain Creek Road"

After climbing up through the "twisties", we turned north at the T intersection just after passing Uriarra settlement, where a couple of clicks further on we turned left onto Mountain Creek Road. After a couple of short stretches of gravel the road wound its way through scenic timbered woodland and farmland before making the Yass - Wee Jasper Road, where we re-grouped. This road took us across the Taemas Bridge over the Murrumbidgee River where we climbed up with good views across to Lake Burrinjuck, eventually reaching Yass. From Yass we headed onto the Hume Highway until we made the Lachlan Valley Way, reaching Boorowa, where some of us topped up the tank. Club members Ron and Kathy Leslie caught us up at Boorowa on their bikes and followed us via the Narrawa Road, through Rugby, to Crookwell. A great run that, if you haven't done it. At Crookwell, we stopped for lunch at Lynams old store and after a re-appraisal of the route back, decided to take up Hoss's suggestion of taking a back road from Goulburn to Breadalbane. Ron and Kathy had plans to catch up with friends in Gunning, so continued that way after lunch.

So following Hoss out of Crookwell, we made Goulburn after a nice run via the Pejar Dam, and after negotiating the centre of that fine city, found the street and road out of town to the west, which was appropriately narrow and winding in enough places to keep us all well interested. Making Breadalbane, we cut off to the narrow connector road south to Collector, from

where we headed back down the Federal Highway and home. In my case, that was a tad over 400 kms. Thanks to those riders who came along to make the day and to Hoss for the Goulburn - Breadalbane route, which I for one hadn't ridden before. We hope to make this a regular thing after each monthly General Meeting, so stay tuned for more in 2013.

CLASSIFIEDS

BMWCCACT members can place an advert in this newsletter and on the website (including a photo) free of charge. Please include your membership number when placing your ad. Ads from non-members may be restricted due to space limitations. The Editor and Webmaster have the right to modify (for space not content), refuse or reject any ad without reason.

FOR SALE

DRIRIDER motorcycle jacket

Best offer; One near new size 8, with forearm padding.



Plus 1 near new medium size Nitro Racing helmet and one pair of near new DRIRIDER medium size gloves.



All in excellent condition. A real bargain for Christmas. Contact Sue Ball-Guymer 0419 628891.

BMW K1200S 2007/08

Black, 26,000km, ABS, ESA, BMW panniers, Remus carbon muffler plus some other carbon fibre bits. Excellent condition. Full service history. \$16,500.

Please call Markus on 0418 632 855.

BMW R1100S 2002



With 70000 kms reluctantly for sale. Lady owner but the shame of it is that Sally is just a too short to be comfortable when the bike is stopped!

Accessories include headlight protector, carbon rear hugger, heated handgrips, panniers, a Ventura rack (not fitted) cylinder head protectors and an accessory plug. The tyres are Pirelli Angels and are about 70%. Doug Bryant and Mick Owen have always serviced the bike. We love this bike – it's just a whisker too big! The bike is located in Tathra but can be in Canberra with a bit of notice! \$8400.

Phone Richard and Sally Gallimore 0447 466 818 (S) or 0477 007 360 (R)

F650GS 2006 Twin Spark – Parts

The bike has gone, so now for the spares & accessories:

- Genuine BMW Tank bag & raincover, \$130
- Givi Pannier Frames & fittings (PL188), \$150
- BMW Factory & Haynes Service Manuals, \$50
- Spark Plugs NGK DR8EB #4855, 4 @ \$5 ea
- Oil Filters OX119, \$15
- BMW Genuine Fork Seals (2) and Dust Caps (2), \$120
- BMW OEM Chain, Front & Rear Sprockets, \$250
- 2 x Mirrors & Mounting Bolts, \$50 set

Parts can be picked up or +postage arranged.

Contact Garry garrysmee@gmail.com or 62915901(h).

BMW R1200R 9/2008



Biarritz Blue, 12,201km, ACT Rego to 9/2012.

Great bike, 2nd owner, Extras include: BMW panniers, GIVI top box, Staintune exhaust (I have the original if you want), sports screen, new Michelin Pilot Road 3 tyres, LED turning signals, BMW sports screen (also have Ztechnik V screen) + more. Complete service history. This is a great fun bike for a quick ride to the bay or the grand tour. You won't be disappointed.

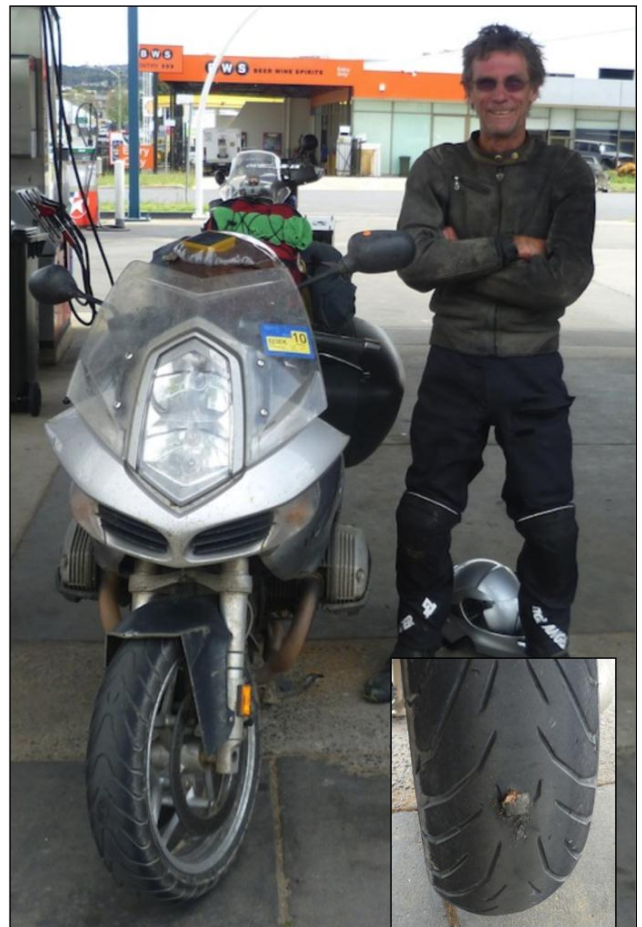
Peter on 0408 239 330 or
peter.frankis@iinet.net.au

WANTED TO BE 😊

Rolfe Classic BMW have an eBay store here:
<http://stores.ebay.com.au/Rolfe-Classic-BMW>

Mick Owen Motorcycles sell on eBay search sellers for 'bmwmotobmw' online or here:
<http://www.eastcoastbms.com.au/>

Dave Morgan's GP Ride continued...



*Rob from Maleny, QLD, R1200ST
and rear tyre puncture, plugged - for now.*



*The Bimetta. One for the Webmaster, twice the bike for
½ the registration.*

APPLICATION FOR MEMBERSHIP

PO Box 4042 Weston Creek, 2611

EFT to: BSB 805-022, account 03318092.

Account name: BMWCCACT

BMW Motorcycle Club
ACT



Membership expires on the last day of February each year.

Applications are subject to committee approval and may take several weeks to process.

Please don't send cash. We do not have credit card facilities.

Payment Type: (please check) EFT Cheque Money Order

SINGLE MEMBERSHIP

\$40.00 plus \$5.00 joining fee. Total \$45.00

(If joining after the general meeting in October the fee is \$20.00 + joining fee)

PARTNER/JOINT/FAMILY MEMBERSHIP

An extra \$5.00 is required for Partner, Joint or Family Membership.

PERSONAL INFORMATION (*mandatory)

• LAST NAME _____
 • FIRST NAME _____
 • ADDRESS _____
 • TOWN _____ POSTCODE _____
 PHONE _____
 MOBILE _____
 E-MAIL _____

PERSONAL INFORMATION (*mandatory)

• LAST NAME _____
 • FIRST NAME _____
 • ADDRESS _____
 • TOWN _____ POSTCODE _____
 PHONE _____
 MOBILE _____
 E-MAIL _____

I would prefer the club magazine: electronic mailed
 I am willing to accept information on club events via e-mail.

Motorcycle 1	MAKE	PREFIX	MODEL	CAPACITY	YEAR
Motorcycle 2	MAKE	PREFIX	MODEL	CAPACITY	YEAR
Motorcycle 3	MAKE	PREFIX	MODEL	CAPACITY	YEAR
Motorcycle 4	MAKE	PREFIX	MODEL	CAPACITY	YEAR

The fees paid as above entitles member/s to receive the Club Magazine, a club badge, sticker and membership card (for each member) and to participate in all the Club activities.

Participants in Club activities are advised that they do so at their own risk. You are required to obey the law at all times and ride with your safety and the safety of others in mind.

I / We agree to comply with the rules of the BMW MCC ACT according to its Constitution.

SIGNATURE 1

SIGNATURE 2


DATE


MEMBERSHIP SECRETARY ONLY Membership # Date
 Application considered by the committee on / / and accepted or declined
 Pres V-Pres Sec Tres Ed Ride Soc Pub Web Memb Clubs
 Cash \$ Cheque \$ Money Order \$ EFT \$ e-mail
 Mailing list Badge/s Sticker/s Membership card/s



Show Hal your current membership card to receive 10% off any purchase.

 19 Lonsdale Street Braddon ACT 2612

 (02) 6247 6804

 (02) 6257 5485

 gearup@tjstyres.com.au

BMW Motorcycle Club
ACT



BMW Clubs
Australia

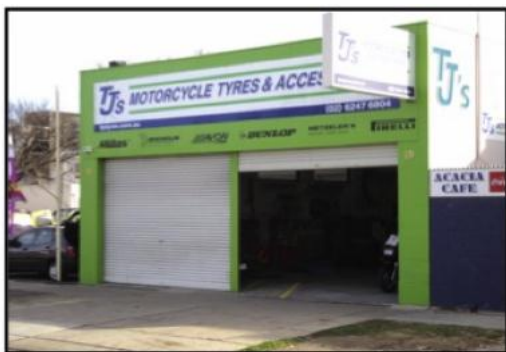


To:



From: BMW Motorcycle Club ACT Incorporated

PO Box 4042 Weston Creek ACT 2611



See Hal at TJ's for all your motorcycle tyre, accessories and service needs at:

 19 Lonsdale Street Braddon ACT 2612

 (02) 6247 6804

 (02) 6257 5485

 gearup@tjstyres.com.au